

FILTON TOWN COUNCIL

ELM PARK | FILTON | SOUTH GLOUCESTERSHIRE | BS34 7PS

Town Clerk: Lesley Reuben

Web: www.filtontowncouncil.gov.uk E-mail: lesley.reuben@filtontowncouncil.gov.uk

Tel: 01454 803918

17th February 2022

Dear Members

You are hereby summoned to a meeting of the **FULL COUNCIL** will be held on **Tuesday 22 February 2022**. To be held at **7pm** in the Filton Sports & Leisure Centre, Elm Park, BS34 7PS

Yours sincerely,

L.A.Reuben,
Town Clerk & RFO.

Please note that it is advised that public submissions are sent to the Council Office 48 hours prior to meeting. office@filtontowncouncil.gov.uk

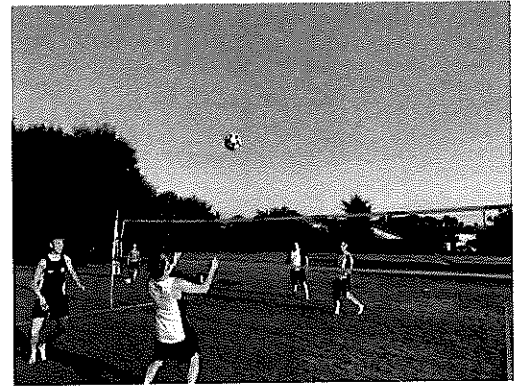
AGENDA

1. Apologies for Absence
2. Evacuation procedure
3. Declarations of Interest
4. Submissions from the Public (max. 15mins).
5. **Presentation/Update on Filton Community Plan – Debbie Teml F.A.C.E (pages 1-22)**
6. To approve the minutes of the meeting held 25th January 2022 (pages 23-24)
7. Matters of report arising from the minutes not otherwise included on the agenda.
8. Filton Beat Team Update (page 25)
9. South Gloucestershire Reports:
Cllr A Monk – (pages 26-27)
Cllr C Wood – (page 28)
10. Submission from members –
11. Reports from Committees, Working Groups, and the Town Clerk:
 - i) Planning Committee held 15th February 2022 (pages 29-31)
 - ii) Full Council Finance and General Minutes 8th Feb 2022 (page 32)
 - iii) Leisure Centre Contract update
12. Consultation Spreadsheet (pages 33-35)
13. Payments for Information

Filton Community Plan 2022-27



Summary Report



Contents

What has happened so far?

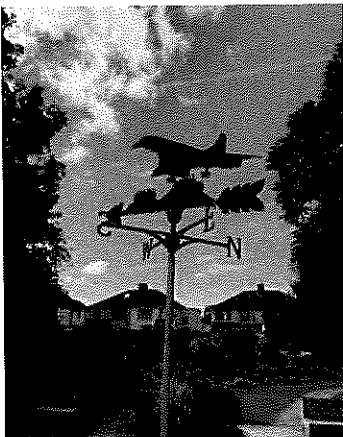
The shaping of the plan

A Vision for Filton

What next?

How can you get involved?

Summary Action Plan





What has happened so far?

Filton was one of six designated 'Priority Neighbourhood' within South Gloucestershire 2003-2017. These areas were based on the national Indices of Deprivation.

During that time, various residents and community groups including 'Filton People' worked towards improving the area. In around 2010 the organisation Southern Brooks Community Partnerships set up and coordinated the 'Filton Working Together' group which held working groups and themed meetings for residents together with council officers, community organisations, and stakeholders to drive initiatives to improve the local community. This model worked well and promoted positive actions, many of which shaped the town Filton is today.

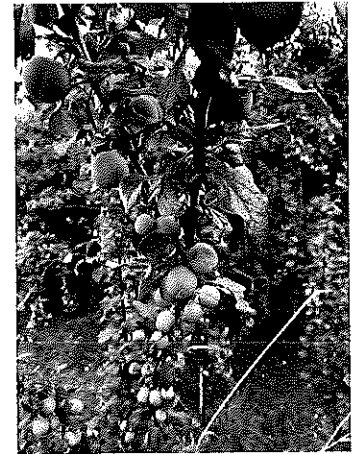
In 2017 the 'Priority Neighbourhood' status was removed from Filton, taking with it extra financial resources, such as protected youth and children's work, community development work, Southern Brooks' facilitation, and other South Glos Council officer time.

Funded by Filton Town Council, Southern Brooks prepared a community plan for 2018-2022. The Covid-19 pandemic in 2020 brought a halt to that plan and all community working groups ceased.

In May 2021 the Filton Town Council commissioned the charity FACE to pull together a new local consultation and create a new Filton Community Plan for 2022-27.

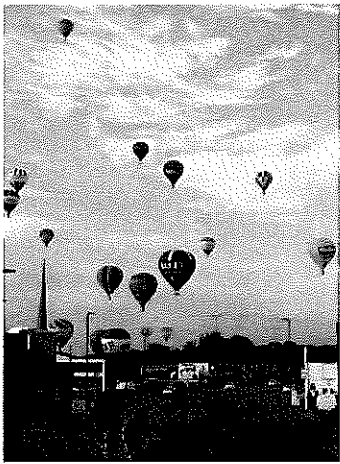


The shaping of the plan



- FACE presented a vision for the Community Plan to the Filton Town Council 'Parish Assembly' meeting in May 2021
- A 'Residents' Survey was then launched online in June and published in the July edition of the Filton Voice newspaper
- 3 community consultation events were held during July and August for residents to attend
- A photography competition ran during July-September
- A Business Breakfast and Working Lunch were held in September for businesses and community groups
- A 'Stakeholders' Survey was launched online in September and sent in the post to 130 businesses and organisations in Filton
- Filton Town Councillors meetings were held September - November
- Networking meetings took place July - October (e.g. with police, schools, council officers, etc.)
- School workshops in one Filton primary school in September, with over 120 children aged 7-11
- FACE then pulled together priority actions and concerns from all those groups and methods to form this summary.





The Vision

The Filton Community Plan will enable residents, stakeholders, and the councillors to work together to achieve common aims to improve the town.



The Filton Community Plan brings together ideas and actions under 5 headings, which are set out in 5 chapters.

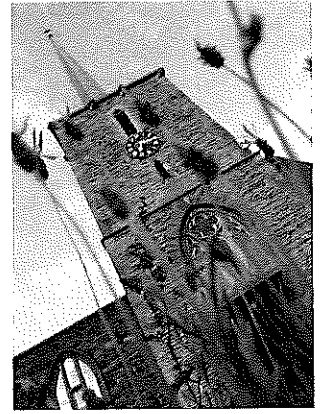
Each chapter has a summary from the public and stakeholders consultations of what is currently working well and what needs to be improved.

There then follows an action plan for each chapter.

This document is a summary of the plan, which is an evolving and live document.

The full Plan is available at:
...[filtoncommunityplanwebsite...](#)





What next?

The Filton Community Plan website will be launched in Spring 2022 and working groups will be established to facilitate the action plan.

Progress on the plan will be reported quarterly through a public newsletter and report to a public Filton Town Council meeting. Regular updates will also be posted on the website.

How can you get involved?

Whether you are a resident, community group, business or local organisation, we would love for you to be involved in developing the Filton Community Plan and improving life in the town.

To find out how you can contribute to this exciting work, please contact ..person to be confirmed...





What is working

Filton has a great community feel, which was highlighted during the Covid-19 pandemic

There are some great community spaces and a mixture of activities for all ages

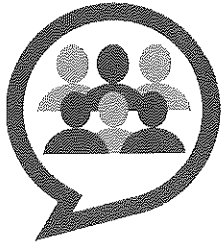
Filton has great accessibility and 80% of people feel it is generally a safe area to live

The town has a library and swimming pool, which other areas don't

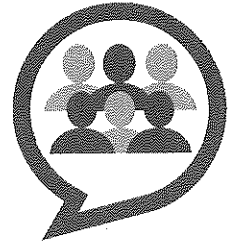
There are active community organisations and volunteers

**"We have so much going for us
as a town, we just don't
celebrate it enough!"**

Survey respondent



Let's improve



Investment in local activity/sport and enhancing the leisure centre is needed

Need more support for Under 5s and their parents

Social issues - such as fly tipping, anti-social behaviour, drug misuse, mental health and social isolation - have an impact on community life

Some community assets are not well utilised for the whole community

Need to improve the relationships between neighbours

Activities are not well advertised, so people do not know what is going on

Playground maintenance plan is needed

'Filton Community Heroes' events would be good

More Youth services provision

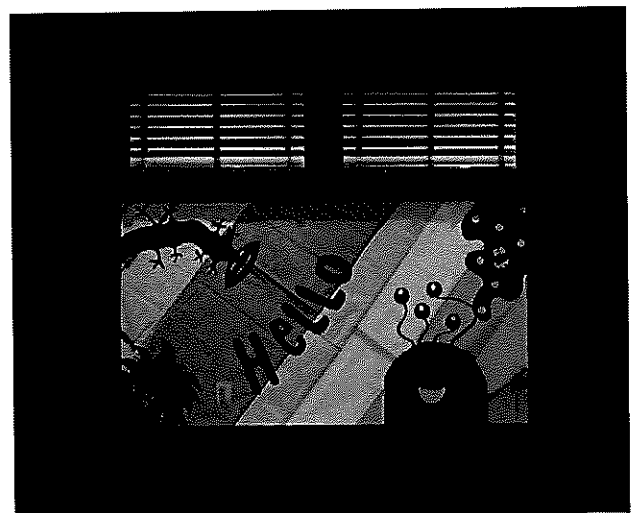
Town Councillors are not always visible in their wards

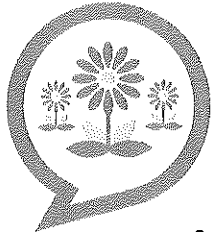
Better awareness of diversity and cultural issues needed



Action Plan

- 1.1 Improve Filton Leisure Centre and 'active' initiatives
- 1.2 Retain and maintain good quality, accessible community spaces
- 1.3 More community events to bring people together
- 1.4 Help new people feel welcome
- 1.5 More Under 5s provision and support for parents
- 1.6 Promote positivity and pride in Filton
- 1.7 Celebrate diversity in Filton
- 1.8 Foster better relationships with the police
- 1.9 Audit and update youth provision to ensure needs are met





*Environment and
Green Spaces*

What is working

Filton has a wonderful Community Garden, run by
volunteers

There are lots of open green spaces, wildlife and trees

Filton is a Fairtrade Town

Town Council target to become Carbon Neutral by 2050

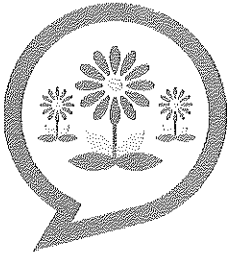
Filton has a few areas of allotments

Filton schools engaging in Forest School and outdoor play

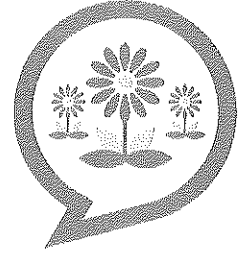
Children are actively engaged in environmental issues and
want to see change

**"Filton Community Garden gives me
freedom, peace of mind, and also space
to enjoy with my grandchildren!"**

Survey respondent



Let's improve



74% of adults and 64% children think littering and dog's mess needs improving - more litter bins and recycling bins in public areas needed, and community litter picks

Reduce use of single-use plastics - starting with Town Council venues

Create a local Nature Plan and a Green Map

Focus on Filton takeaways to improve use of compostable containers and improve littering issues

Better maintenance of allotments, so not overwhelming for new people

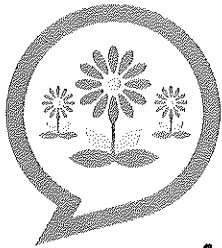
Improve use of verges, street décor and flower baskets

Benches in the shade needed at Millennium Green

Let's hold a Filton in Bloom competition

Electric car charging points at Filton Leisure Centre

Development of space, e.g. at the bottom of Elm Park and behind Canberra Grove, for community wildlife areas



*Environment and
Green Spaces*

Action Plan

- 2.1 Create a Filton Nature Plan and Green Map
- 2.2 Become a 'Green Town'
- 2.3 Enhance verges and improve Filton streets
- 2.4 Keep Filton Tidy campaigns
- 2.5 Develop a community vegetable patch
- 2.6 Explore better use of disused spaces for wildlife and biodiversity
- 2.7 Carbon Neutral Plan action group
- 2.8 Filton Town Council Green Audit
- 2.9 Actively maintain 'Fairtrade Town' status





What is working

82% of people find it easy to get around in Filton

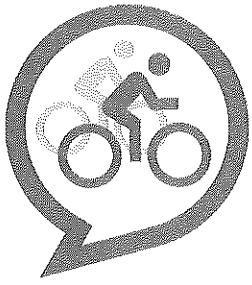
Filton has easy access - within 2 hours by road or rail you can be in the city centre, at the countryside, or on a beach!

It is a perfect location for students, high quality employers, and has great local schools for families

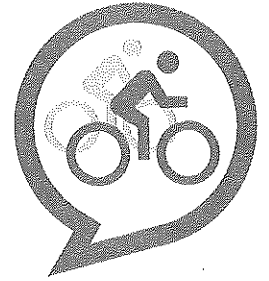
Filton is cheaper than living in a city centre, yet has the feel of a large vibrant town

There is a mixture of housing stock and a multi-generational feel to the town

"It's the best of both worlds as a suburb and near to a city centre!"
Survey respondent



Let's improve



There is seemingly a lack of care from landlords and transient populations about the area

There is too much negativity on social media making people feel unwelcome

24% of people don't enjoy living in Filton

Crime seems to be high at the moment - especially burglaries and non-residential dwellings

Conygre area suffers with no public transport links

Pavements are overgrown and cars park across them making it unsightly and unsafe

Need to campaign at South Glos Council Policy level ,so Filton doesn't get forgotten

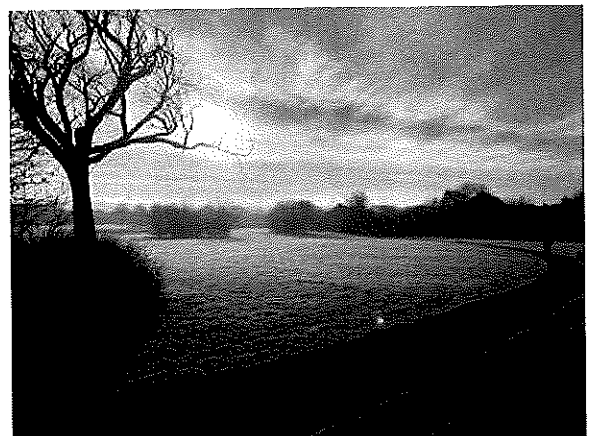
School parking and e-scooter use needs to improved

Need to instil pride in the area and better neighbourliness



Action Plan

- 3.1 School parking campaigns
- 3.2 Explore and promote Green Travel routes
- 3.3 Improve safety and use of e-scooters
- 3.4 Electric vehicle charging points at Elm Park
- 3.5 Improve parking provisions across the area (disabled spaces, residents schemes, better parking, etc.)
- 3.6 Ward Councillors audits and inspections in their wards
- 3.7 Develop better community cohesion between organisations, councillors, and public
- 3.8 Improve lighting
- 3.9 Establish an active landlords' association





What is working

Filton has a great selection of primary schools

There are mixed retail areas, together with large and small businesses, on our doorstep

We have a college and university within walking distance

Local employers providing apprenticeships

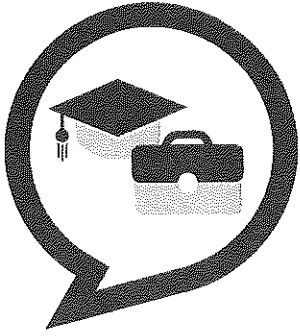
Children are happy in Filton

Local community organisations provide volunteering opportunities

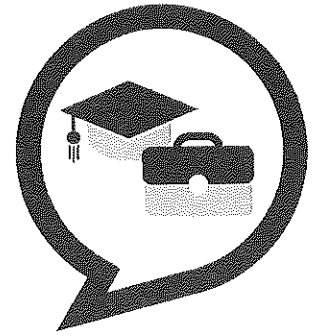
Adult education courses and Community Learning opportunities are run weekly in Filton

"Educate people about what we already have, promote it widely and celebrate it. We are not a deprived area, but sometimes we act like it!"

Survey respondent



Let's improve



Regular networking events needed

Encourage diversity in businesses and encourage start-ups
and more apprenticeships

Pop-up markets or local tradespeople events

More partnership opportunities with the local multi-nationals
(Airbus, Rolls Royce, YTL, etc)

Cultural days and events to highlight diversity in the economy

Need more places to just sit and have a relaxed coffee

More spaces for remote working / meetings

Break down the digital divide

Local job advertising - needs to be affordable

Healthy food and vegan options

Improve financial capabilities and safety

Pharmacy and post office missed at Filton Park



Action Plan

- 4.1 Form a Filton Traders Association (or similar)
- 4.2 Deliver financial management sessions
- 4.3 Regular networking events
- 4.4 Breakdown the digital divide
- 4.5 Promote local jobs and volunteering opportunities
- 4.6 Explore and enhance school catchment areas
- 4.7 Encourage business diversity and improve spread of provisions across the town
- 4.8 Improve adult education provision
- 4.9 Filton traders events
- 4.10 Promote local businesses and charities more visibly





What is working

Filton Voice monthly free newspaper is a valued source of information - especially for those not online

Active South Gloucestershire Councillors respond to requests through email / social media

There is a town council who meet regularly and could be a mechanism for local change

Active community groups and charities advocating on behalf of disadvantaged people

The community survey was a welcome chance for people to be consulted and feel listened to.

"It is nice to be asked what I think"

"It's sad there are a minority of people spreading negativity online, not focusing on getting off their keyboards and doing something positive to change their perspective"

Survey respondent



Let's improve



Filton Town Council media strategy, improved website and communication channels

Regular focused awareness campaigns of local issues

Quarterly ward surgeries or events for councillors to be alongside ward residents

Improve publicity of Town Council meetings and accessibility of information

Improved opportunity for public submissions to town council (suggestion box at leisure centre?)

Diversity in the community to be celebrated more

Develop a regular youth forum

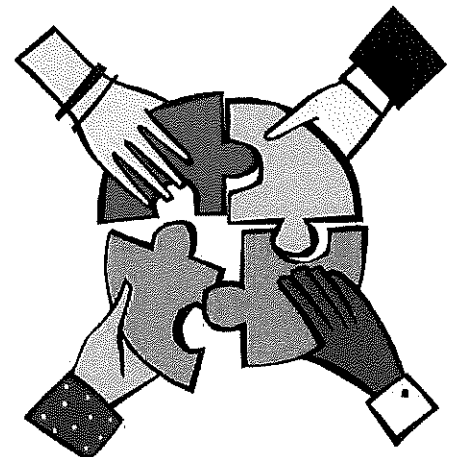
Town Modelling exercise to be undertaken with South Gloucestershire Council

Raise profile of South Gloucestershire consultations to ensure Filton is not overlooked

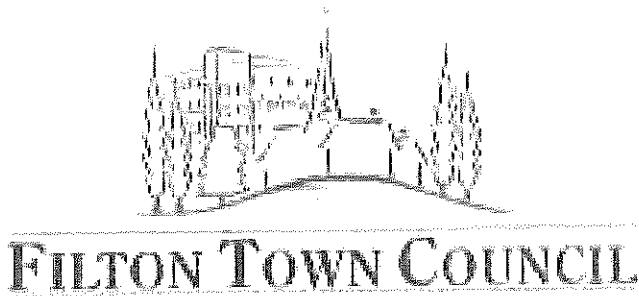


Action Plan

- 5.1 Create and implement a new Filton Communication and Media Strategy
- 5.2 Improve online presence (website & social media)
- 5.3 Develop better councillor/resident relationships
- 5.4 Raise profile of Filton in South Gloucestershire
- 5.5 Enhance Young Peoples' Voice in Filton
- 5.6 Improve engagement in Filton Town Council meetings and events
- 5.7 Ward councillors active in their wards
- 5.8 Implement a suggestion box and update on actions
- 5.9 Filton Neighbourhood Planning to be undertaken, with South Gloucestershire Council



**For more information
about the development of
the Plan please contact:**



Town Council office
01454 866698



FACE office
0117 9691938

PRESENT: Cllrs: D Collins (Chair), B Mead (Vice Chair), K Briffett, M Chaudhry, A Kenyon, Dan Boardman, A Robinson, A Bird, T Mewies, C Wood

ALSO, PRESENT: Lesley Reuben (Town Clerk), Carla Westcott (Town Council Support Officer)

APOLOGIES: I Scott, A Doyle, A Monk

NON-ATTENDANCE: N/A

0338. APOLOGIES FOR ABSENCE: Apologies were noted

0339. EVACUATION PROCEDURE: Chair of Council gave evacuation procedures

0340. DECLARATIONS OF INTEREST: None received

0341. SUBMISSIONS FROM PUBLIC: Various residents spoke regarding concerns about Millennium Green and ideas on how to improve the area discussions took place. It was agreed for FTC to investigate the excess brambles, contact South Glos Council regarding traffic calming on Northville Road. The Beat Team are already aware of the activity around drug taking reported by residents using the field. It was suggested for the Council to have one resident as a point of contact to ensure regular updates, this was agreed, and a resident was nominated, and details taken.

Action FTC Office

0342. MATTERS OF REPORT ARISING FROM THE MINUTES NOT OTHER INCLUDED ON THE AGENDA: None

0343. SOUTH GLOUCESTERSHIRE REPORTS:

Cllr A Monk: Noted

Cllr C Wood: Noted.

0344. SUBMISSION FROM MEMBERS:

i) Notice of Motion 1 proposed by Cllr A Robinson and seconded by Cllr D Collins.

To obtain quotations for new gates to be fitted to all entrance/exits of Millennium Green. Design of gates to:

1) restrict access for motorcycles.

2) secure enough to stop dogs running out on to the road.

3) enable access for pushchairs, please note the construction of the path is made up of chippings & scalping and is uneven and not user friendly.

After discussions, **voting took place 8 FOR 2 AGAINST Motion carried**

ii) Notice of Motion 2 proposed by Cllr C Wood and seconded by Cllr A Monk

"Filton Town Council agrees to install a flagpole and Union Flag to commemorate the Platinum Jubilee of Her Majesty Queen Elizabeth II. The council further agrees to fly the Union Flag at all times from the point of its installation and ensure that flags meet and are maintained to an appropriately high standard".

After a short discussion it voted **5 FOR 5 AGAINST with the Chair having the casing vote FOR. Motion carried**

0345. REPORTS FROM COMMITTEES, WORKING GROUPS AND THE TOWN CLERK:

i) Planning Committee minutes 9th December 2021 and 13th January 2022. Noted for information purposes

ii) Precept requirement 2022/23 – the submission forms circulated were approved as an accurate record of FTC's requirement.

iii) Bank Signatory – extra member required. Cllr Doyle has offered to be extra signatory and this was agreed nem.con

0346. CONSULTATION SPREADSHEET: Noted for information purposes

0347. PAYMENTS FOR INFORMATION: Noted

0348. FILTON BEAT TEAM UPDATE: Report Noted

CHAIR ENDED MEETING AT 8.44PM

Filton Beat Team Report

We have not seen the usual large spike of burglaries and non-dwelling burglaries over the winter months. Burglary reports continue to be low at this current time. We are still committed to providing both high-visibility and plain clothes patrols in and around the area.

There has been several shoplifting offences in and around the Filton area predominantly Filton Avenue and Shield retail park. Work is ongoing with the stores to collate the evidence and suspects are being actively sought.

There had previously been several reports of ASB in Millennium Green in the form of two quad bikes and a scrambler bike. We have continued to conduct a number of reassurance patrols at both Millennium green and Elm Park, but have not unfortunately identified anyone yet or located the riders. Officers recently located an abandoned small motor bike which had been set alight. Unfortunately there was no lines of enquiry in relation to this. The reports of ASB in this area seem to be less frequent.

Recent ASB seems to have been centred on Abbeywood Retail Park and primarily McDonalds. Patrols have been conducted and several groups have been moved on. Officers have engaged with E scooter riders, with one youth detained and E scooter seized following ASB issues.

We have continued to conduct multiple school patrols at drop off and pick up time. There has been engagement with parents and residents to address parking issues. Complaints of issues and confrontations have declined. Schools have sent out notices within their school communications to parents informing them to park with consideration of the residents, other road users and primarily the safety of the children.

Police have also recently undertaken a school talk to Pupils at Shield, engaging with year 6 pupil's reference internet safety.

Several parking and driving complaints have been received in relation to Conygre grove, Filton Avenue and Northville road. Officers have carried out patrols and liaised with the informants following reports. PCSO'S have engaged with South Gloucestershire council to highlight issues and active patrols will continue to monitor and deal with any issues.

Councillor Adam Monk Report to Filton Town Council February 2022

In my last report, I made a mistake quoting a 4 % increase, that was incorrect. The increase voted upon on February 16th at South Glos Council will see Tax will increase by 2.99% for the SGC element.

The Revenue Support Grant is a pot of central government money divvied out to councils, for them to use as they see fit.

South Gloucestershire used to receive millions of pounds in Revenue Support Grant funding. Today, it doesn't get a penny:

Financial Year	South Glos RSG funding
2014/15	£43,171m
2015/16	£34,887m
2016/17	£25.3m
2017/18	£0
2018/19	£0
2019/20	£0
2020/21	£0
2021/22	£0

It's important to note that since 2017, South Gloucestershire Council has benefitted from a pilot scheme that's allowed it to keep all of the money it raises from Business Rates, rather than just a portion of it. This is a pilot scheme hasn't offset the millions it's lost from not getting any Revenue Support Grant funding whatsoever - hence continued rises in Council Tax: In addition, this is a pilot and is currently being extended by one year.

Financial Year	South Glos Band D Council Tax per year
2014/15	£1245.20
2015/16	£1245.20
2016/17	£1295.00
2017/18	£1359.62
2018/19	£1441.07

2019/20	£1484.15
2020/21	£1543.37
2021/22	£1620.39

South Gloucestershire's Council Tax was frozen for five years, between 2011/12 and 2015/16 – a time when it was receiving significant sums from the Revenue Support Grant.

South Glos has maintained a balanced budget but it must be recognised that is down to a large number of one off grants. The current balanced 4 year budget is achieved by using a significant portion of reserves taking them to the recommended minimum at the end of that 4 year term.

I am pleased to say that the Labour group pretended 2 amendments which were unanimously accepted, they were 2.

1, £ 75,000.00 to provide additional funding for therapeutical intervention for victims of serious sexual abuse. This reducing will reduce the wating time for 50 users of the service from 48 months to 3 months.

2, £7,300.00 to provide 10 climate adaption workshops for key stage 2 children. These workshops will provide young people with the skills required to dela with climate extremities such as heat and flooding.

HMO Consultation on Article 4 Directive.

The consultation commenced on 7th February which also ties in with the start of the Local Plan consultation. Households within Filton will receive a letter through their front door by now or in the very near future.

Councillor Chris Wood Report

We have had our first success in combatting the number of inappropriate HMO planning applications. Following the submission of an HMO application on Fifth Avenue in Filton (P21/07108/F), South Gloucestershire Council concluded that it exceeded the acceptable threshold within the area under new guidance introduced last year. This would mean it would adversely impact the community and so was recommended refusal. Recent years have seen an increase in HMOs in Filton, with the concentration of cases in some areas resulting in anti-social behaviour, parking pressures, waste and recycling management and noise complaints.

Working to stem the tide, South Gloucestershire Council approved a new Supplementary Planning Document (SPD) in September 2021, which requires new HMO applications to meet planning policy requirements. This was further supported by plans announced at the end of last year to introduce an Article 4 Direction, a means by which the Council can require developments such as HMO applications which don't normally requiring planning permission to have to apply and be considered against planning policy and the impact it would have on the local community.

I am absolutely delighted that we have seen our first success in our attempts to stem the tide of HMO applications in Filton which, if left unchecked, will have an irreversible negative impact on our community. I will continue to oppose unnecessary applications that are of no benefit to Filton and look forward to seeing future successes come through.

South Gloucestershire Council's Article 4 Direction (A4Ds) consultation went live on Monday 7th February. Details providing further explanation about A4Ds, what's being proposed and why and how to make comments can be accessed via this link <http://www.southglos.gov.uk/planning-policy-guidance>

The consultation is promoted via:

- On the South Gloucestershire Council's website <https://beta.southglos.gov.uk/planning-policy-guidance>
- Local media and social media on South Gloucestershire Council's Facebook page
- Through an advert in Western Daily Press which covers the whole of South Gloucestershire Council area
- Through an advert in the March edition of Filton Voice
- Public Notices placed across the two proposed A4D boundary areas.
- In South Gloucestershire Libraries and One-Stop Shops (please refer to www.southglos.gov.uk/libraries for locations and opening times).
- Letter delivered to every household within the two proposed A4D boundary areas
- Email/ letter sent to everyone on the South Gloucestershire Council's Local Plan database
- The West of England Landlords forum and to landlords of Licenced HMO properties in South Gloucestershire
- Our equalities partners with the objective to strengthen community and stakeholder involvement and awareness of the procedures for implementing the A4Ds.

Cllr Christopher Wood

South Gloucestershire District Council

SCHEDULE OF PLANNING APPLICATIONS 15/02/2022

FILTON REF	SOUTH GLOS. REF	APPLICATION	EXPIRY DATE	COMMENTS
F.3851	P22/00519/CLP	180 Conygre Grove Filton South Gloucestershire BS34 7HZ Erection of single storey rear and side extension to form additional living accommodation.	Mon 21 Feb 2022	<p>Comment</p> <ul style="list-style-type: none"> • Query suitable drainage system • Insufficient parking • Query roof choice?
F.3852	P22/00522/F	42 Wades Road Filton South Gloucestershire BS34 7ED Erection of two storey and single storey rear extension and installation of rear dormer with hip-to-gable roof extension to facilitate change of use from a small house in multiple occupation for 3-6 people (C4) to a large house in multiple occupation for up to 7 people (sui generis) as defined in the Town and Country Planning (Use Classes) Order 1987 (as amended) to include alteration to pedestrian access.	Tue 22 Feb 2022	<p>Objection</p> <ul style="list-style-type: none"> • Already 6 bed HMO at 48 and 20 Mackie Road • Insufficient parking • Sandwiched residents between the HMO's, • Loss of outside amenity space, • Overdevelopment • Increased burden on sewage and drainage system, • The proposal for a HMO (house in multiple occupation) of 7 beds has been found to be contrary to the recently adopted supplementary planning document which states that in localities where known HMO properties already represent more than 10% of households the introduction of additional HMOs will be unacceptable. This area of Filton has a 11.2% concentration of HMOs and as such the change of use into a large HMO fails to meet adopted Policy CS17 of the South Gloucestershire Local Plan: Cores Strategy (Adopted) 2013 and PSP39 of the Policy Sites and Places Plan (Adopted) 2017 and the adopted SPD Houses in Multiple Occupation (Adopted) 2021

SCHEDULE OF PLANNING APPLICATIONS 15/02/2022

<p>F.3853</p>	<p>P22/00589/HH</p>	<p>1 Roycroft Road Filton South Gloucestershire BS34 7NL Erection of single rear extension to provide additional living accommodation.</p>	<p>Fri 25 Feb 2022</p>	<p>Objection</p> <ul style="list-style-type: none"> • Already 6 bed HMO at 3 + 5 Roycroft Rd and 2-6 Brabazon Rd • Overdevelopment • The proposal for a HMO (house in multiple occupation) of 6 beds has been found to be contrary to the recently adopted supplementary planning document which states that in localities where known HMO properties already represent more than 10% of households the introduction of additional HMOs will be unacceptable. This area of Filton has a 11.2% concentration of HMOs and as such the change of use into a large HMO fails to meet adopted Policy CS17 of the South Gloucestershire Local Plan: Cores Strategy (Adopted) 2013 and PSP39 of the Policy Sites and Places Plan (Adopted) 2017 and the adopted SPD Houses in Multiple Occupation (Adopted) 2021.
<p>F.3854</p>	<p>P21/07614/F</p>	<p>Units E And F Horizon 38 Taurus Road Patchway South Gloucestershire BS34 6FE Change of use to a flexible mixed use within Use Classes E(g), B2 and B8 (with ancillary trade counters) and as a Construction Apprenticeship Training Centre (Use Class F1(a)) as defined in the Town and Country Planning (Use Classes) Order 1987 (as amended).</p>	<p>Sat 26 Feb 2022</p>	<p>No Comment</p>
<p>F.3855</p>	<p>P22/00642/F</p>	<p>42 Mayville Avenue Filton South Gloucestershire BS34 7AB Erection of single storey side and rear extensions and installation of rear dormer to facilitate loft conversion including vehicle parking, bin storage and cycle parking to accommodate Change of Use from C4 HMO to ten bedroom large house in multiple occupation (Sui Generis) for up to ten people.</p>	<p>Tue 01 Mar 2022</p>	<p>Objection</p> <ul style="list-style-type: none"> • Overdevelopment • Insufficient parking • Lack of bus provision to supply non drivers • Already 6 bed HMO's 6,19,36 Boverton Rd, 7,10,26,29 Rodney Crescent, and 22 Glebelands • The proposal for a HMO (house in multiple occupation) of 10 beds has been found to be contrary to the recently adopted supplementary planning document which states that in localities where known HMO properties already represent more than 10% of households the introduction of additional HMOs will be unacceptable. This area of Filton has a 11.2% concentration of HMOs and as such the change of use into a large HMO fails to meet adopted Policy CS17 of the South Gloucestershire Local Plan: Cores Strategy (Adopted) 2013 and PSP39 of the Policy Sites and Places Plan (Adopted) 2017 and the adopted SPD Houses in Multiple Occupation (Adopted) 2021

SCHEDULE OF PLANNING APPLICATIONS 15/02/2022

F.3856	P22/00578/CLP	23 Mackie Grove Filton South Gloucestershire BS34 7NG Installation of rear dormer to facilitate loft conversion.	Tue 01 Mar 2022	Comment • Insufficient parking
F.3857	P21/07154/F	15 Braemar Crescent Filton South Gloucestershire BS7 0TD Change of use from residential dwelling (C3) to a eight-bedroom large house in multiple occupation (Sui Generis) for up to eight people (including erection of side/rear extension and loft conversion/dormer - for which approval has already been granted) with parking, bin and cycle storage.	Not set	
F.3858	P21/02612/F	54 Fourth Avenue Filton South Gloucestershire BS7 0RW Demolition of existing garage and lean-to rear extension. Erection of two storey side and single storey rear extension to form additional living accommodation. (Resubmission P21/02612/F)	Thu 03 Mar 2022	Comment • Query access to third parking space
F.3859	P22/00649/HH	20 Charborough Road Filton South Gloucestershire BS34 7QZ Erection of a two and first floor side extension to form additional living accommodation.	Fri 04 Mar 2022	Comment • Insufficient parking
F.3860	P22/00726/HH	682 Southmead Road Filton South Gloucestershire BS34 7Q1 Erection of a first floor side and rear extension to form additional living accommodation.	Mon 07 Mar 2022	Comment • Loss of light to the neighbour • Visually improves the house
F.3861	P22/00840/HH	18 Eleventh Avenue Filton South Gloucestershire BS7 0QN Erection of single and two storey rear extension and front porch to form additional living accommodation.	Tue 08 Mar 2022	No Comment

PRESENT: Cllrs: T Mewies (Vice Chair) D Collins, A Bird, D Boardman, K Briffett, A Kenyon, I Scott, M Chaudhry, T Mewies, A Robinson, C Wood,
ALSO, PRESENT: Carla Westcott (Town Council Support Officer)
APOLOGIES: A Doyle (Chair), A Monk
NON-ATTENDANCE: N/A

0336. APOLOGIES FOR ABSENCE: Apologies were noted

0337. EVACUATION PROCEDURE: Chair of Council gave evacuation procedures and COVID 19 compliance details.

0338. DECLARATIONS OF INTEREST: There were none.

0339. TO APPROVE THE MINUTES OF THE MEETING HELD 11th JANUARY 2022: The minutes were approved as accurate.

0340. MATTERS OF REPORT ARISING FROM THE MINUTES NOT OTHER INCLUDED ON THE AGENDA:

i) Notice of Motion 1 proposed by Cllr A Robinson and seconded by Cllr A Bird

To obtain a plaque (with spike) for the oak trees donated to Filton by the Queens Green Canopy legacy? The two gifted English oaks were planted in millennium green by Filton Town Council.

Plaques must be from official vendors, The QGC legacy also suggests that local children or groups be the guardians of the trees.

Discussions took place and it was decided to obtain 3 quotes for best price and to involve the local schools to be guardians of the trees.

It was voted **UNANIMOUSLY FOR** . The Motion was carried

0341. PUBLIC PARTICIPATION: No Submission

0342. REPORTS FROM COMMITTEES, WORKING GROUPS AND THE TOWN CLERK:

i) Filton Leisure Centre Update. The meeting had been moved until 14th February so no update available until next Full Council Meeting

0343. GRANT APPLICATION: - North Bristol Colour Guard:

B Coulter attended with a member of the group presented and answered all questions.

It proposed and seconded and voted **UNANIMOUSLY FOR** to award the whole amount to the application.

ACTION FTC Office

0344. PAYMENTS FOR INFORMATION: The documents were not available as accounts had not visited since previous meeting.

THE CHAIR CLOSED THE MEETING AT 7.55pm

Public Consultation Spreadsheet February 2022

Consultation	Consultation Period	Summary
Houses in Multiple Occupation Article 4 Direction Proposal		<p>To withdraw specified permitted development rights to convert dwelling houses (C3) to small Houses in Multiple Occupation (HMO) (C4) without planning permission, within specifically defined areas of Filton and Stoke Park & Cheswick wards through a direction made under Schedule 3 Procedures for Article 4 Directions of the Town and Country Planning (General Permitted Development) Order 2015.</p> <p>South Gloucestershire Council is now consulting on making an Article 4 Direction to remove permitted development rights for a change of use from a dwelling house (Use Class C3) to a House in Multiple Occupation (Use Class C4) within two areas in: Stoke Park & Cheswick ward and to the east of Southmead Road and Gloucestershire Road North, in the Filton ward.</p> <p>This proposal to introduce the A4Ds is considered to be most compliant with national planning policy guidance that requires that an A4D is justified and necessary, as well that they should cover the smallest geographic area possible.</p> <p>In coming to this outcome, it is considered that there is not a sufficient or evidenced case to justify an A4D based on wards, given that the HMO concentrations are demonstrably localised to areas within wards. Furthermore, it is considered that a 'do nothing' approach would not be appropriate given that there is evidence that some areas of the district have significant HMO concentrations and communities are experiencing harm to their local amenity, which could be in part attributed to such development.</p> <p>To comment on the proposal for an Article 4 Direction for Houses in Multiple Occupation please fill out our online survey. Please note that responses received, including your details, cannot be kept confidential and will be made publicly available.</p>

Public Consultation Spreadsheet February 2022

<p>Consultation on School Term and Holiday Term dates for the academic year 2023-24.</p>	<p>14 Jan 2022</p>	<p>28 Feb 2022</p>	<p>As in previous years, there have been discussions between the Local Authorities in the South West Region in order to enable, as far as possible, common proposed dates. Given the dates proposed in the region, South Gloucestershire proposes one model for consultation. This model set out a 195 day year within which schools would be responsible for identifying five staff inset days. The main features of the model are as follows: the first day of the school year is on Friday 1 September 2023; breaks of two full weeks at Christmas and Easter; a five-day break in October, February and May; the last day of the academic year is Tuesday 23 July 2024; the number of broken weeks is limited to two (at the start and end of the school year) You can ready the proposed term and holiday dates here. Any comment on this proposal may be sent to South Gloucestershire Council by email to charlotte.johnston@southglos.gov.uk A final recommended model will be determined by the Cabinet Member for Schools, Skills and Employment and published on the council website and circulated to schools.</p>
<p>All Age Learning Disability Strategy Consultation</p>	<p>15 Dec 2021</p>	<p>09 Mar 2022</p>	<p>The strategy sets out our vision and priorities for people of any age with a learning disability in South Gloucestershire for the period from April 2022 to March 2027. The strategy is the first All-age learning disability strategy for South Gloucestershire. It was developed with the Learning Difficulties Partnership Board and included input from key people including parents and carers, providers, practitioners, commissioners, schools, and adults and young people with learning disability. What is a Learning Disability? In South Gloucestershire we have adopted the Eric Emerson and Pauline Heslop "A working definition of learning disabilities". Learning disability includes the presence of: a significantly reduced ability to understand new or complex information, to learn new skills (impaired intelligence), with; a reduced ability to cope independently (impaired social functioning) which started before adulthood, with a lasting effect on development. Examples of this would be difficulty with everyday activities – for example household tasks, socialising or managing money – which affects someone for their whole life. People with a learning disability tend to take longer to learn and may need support to develop new skills, understand complicated information and interact with other</p>

Public Consultation Spreadsheet February 2022

		<p>people. Many people with learning disability prefer to use the term 'learning difficulty'.</p> <p>About the strategy</p> <p>Our vision</p> <p>Our vision for the strategy is that people with a learning disability in South Gloucestershire will live safe, good, healthy and fulfilled lives as part of their community. They will have the right support at the right time to achieve their full potential. "Together we can and we will achieve."</p> <p>What this means</p> <p>By putting this strategy into action, we aim to achieve:</p> <ol style="list-style-type: none"> 1) Effective planning for smooth transitions for young people preparing for adulthood. 2) Increase employment and vocational education and training opportunities for people with a learning disability. 3) Provide a range of good quality housing and support options for people with a learning disability with a clear pathway on how to access them. 4) Promote independence - ensuring people are safe and connected to their community. 5) Promote support networks for family, friends, parent and carers who support people with a learning disability. 6) Work in partnership with health to deliver better health and wellbeing outcomes for people with a learning disability and their parents and carers. <p>These are the six priorities that form the framework of the strategy that will enable us to deliver on our vision.</p>
--	--	--